

WILDFIRE SAFETY SETTINGS

INFORMATION SHEET
COLORADO

DOING OUR PART TO PROTECT OUR COMMUNITIES



About Wildfire Safety Settings

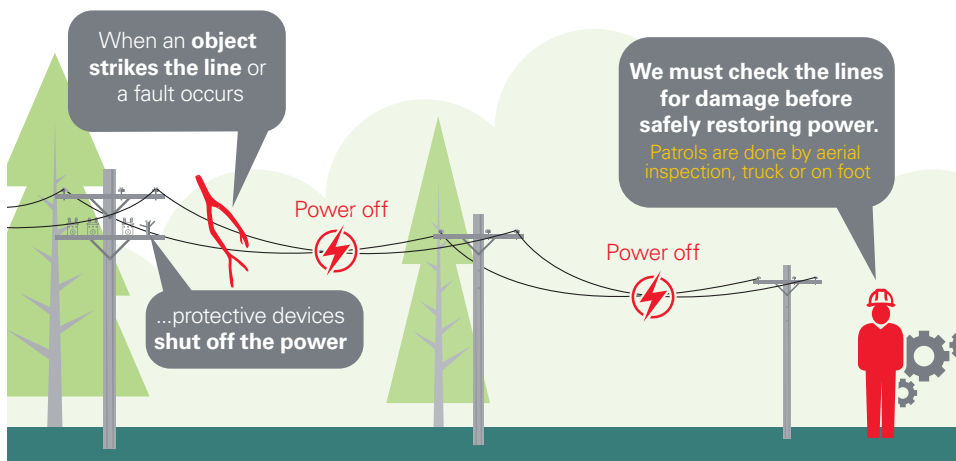
As wildfire risk increases across the West, we're committed to working hard every day to improve safety and reduce wildfire threats across our service area. As part of this commitment, Xcel Energy's Wildfire Mitigation Program is designed to help protect lives, property and Colorado's forests from the threat of wildfire by proactively implementing various mitigation strategies to prevent our electric system from becoming the source of an ignition. One of these mitigation strategies is Wildfire Safety Settings.

In Wildfire Risk Zones, Xcel Energy has implemented a Wildfire Safety Settings pilot program in select areas of our electric distribution system. These settings use upgraded wildfire devices to operate our system more conservatively when wildfire conditions are elevated due a combination of high temperatures, dry ground fuel and high winds. By enabling more sensitive protection settings during times of increased fire risk, we help keep our customers and communities safe. Please keep in mind that wildfire risk may exist year-round in some areas.



How it works

We've upgraded select areas of our electric distribution system with wildfire devices that support more sensitive protection settings during periods of high wildfire risk. These upgrades allow the system in these areas to instantly interrupt the flow of energy through a power line segment when a fault is detected, such as a tree branch or other object making contact with the power line, to prevent the potential ignition of ground fuel. When the system is in Wildfire Safety Settings mode, the line remains de-energized until crews can patrol the area to ensure it is safe to restore service. Communities in designated risk zones may experience more frequent or longer outages, as we ensure the safety of our customers in these areas.



Preparing for potential outages

We understand how disruptive it is to lose power, and that's why we're working hard to reduce the impact of outages and help you be prepared. It is not possible to notify customers in advance of outages caused by these enhanced safety settings, so we encourage customers to update their contact information and sign up for outage notifications at **myaccount.xcelenergy.com** or by calling **800-895-4999**. If an outage is triggered by our Wildfire Safety Settings, this will ensure we can communicate the outage's status and estimated restoration time.

Learn how to prepare for potential outages, report an outage or check an outage status by visiting **xcelenergy.com/Outages**. For outage information, you can also:

- Text OUT to **98936** to report an outage, or text STAT to check the status of an outage.
- Use Xcel Energy's mobile app available on iOS and Android.
- Call **800-895-1999**.

For more information about our Wildfire Safety Settings pilot program, visit **XcelEnergyWildfireMitigation.com/Operational-Awareness**, call **833-352-0087** or email **info@XcelEnergyWildfireMitigation.com**.

